



**AquaBlok**<sup>®</sup>  
Composite Particle System

We've built a  
**Better Bentonite.**  
[www.aquablok.com](http://www.aquablok.com)

**“NATURE’S DUCT TAPE”**

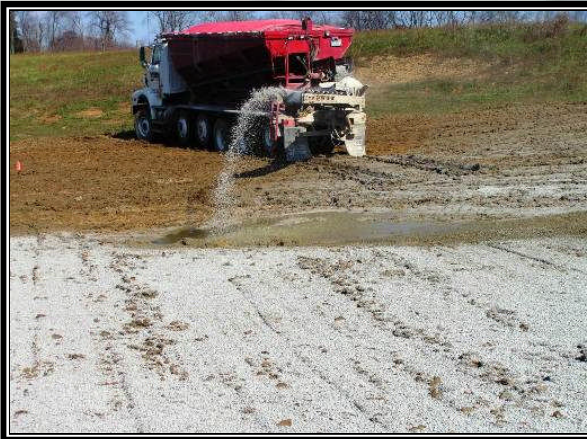
Due to its reliably low permeability, solid core structure, and ability to self-compact, **AquaBlok** can be used in a wide range of circumstances – specifically as a means to “blok” the movement of water or water-born contamination.

Specifically as a water sealant, the bentonite-wrapped “composite particle” can be applied as a basin liner during construction [1 & 2] and even through standing water [3] – to rehabilitate ponds, lakes, and other waterways.

It can also be used as a barrier in cut-off wall or trench installations in dams and levees [4], to seal around water control

structures [5] such as overflows, spillways, etc. and in a broad range of utility applications (e.g. trench dams, anti-seep collars [6], infiltration reduction [7]).

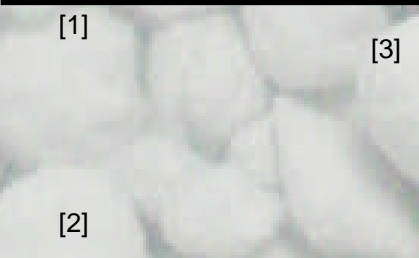
It's this unique versatility that has led to the nickname Nature's Duct Tape™!



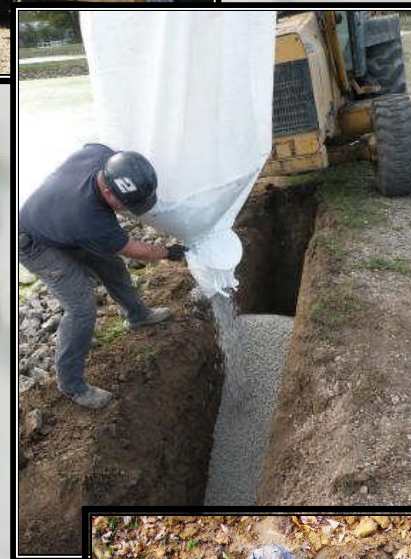
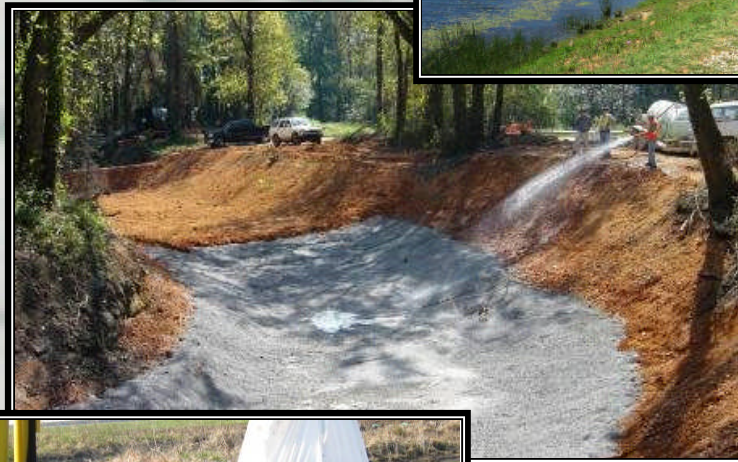
[1]



[3]



[2]



[4]



[5]



[6]



[7]

**AquaBlok, Ltd.**

3401 Glendale Ave. Suite 300  
Toledo, Ohio 43614 U.S.A.

[www.aquablok.com](http://www.aquablok.com)

Telephone (800) 688-2649  
Facsimile (419) 385-2990

AquaBlok<sup>®</sup> is a patented product of AquaBlok, Ltd.  
©2012 AquaBlok, Ltd. All rights reserved.  
Rev. 8/30/12

**General Advantages/Physical Attributes:**

- ⊙ Effective for leak prevention and repair – both during and after initial construction
- ⊙ Composed of high-quality Wyoming sodium bentonite coated over a limestone aggregate core
- ⊙ Offers targeted delivery – solid core serves as an anchor, delivering the clay and holding it in place
- ⊙ Appropriate both before inundation and through standing water – often eliminating need to drain the basin
- ⊙ Consistently swells to form reliable, extremely low-permeable seal
- ⊙ Highly durable – heals if disturbed, withstands freeze/thaw cycles & re-hydrates an infinite number of times
- ⊙ Improves handling – dramatically minimizes dusting, dissipation, and product loss (sinks “like a stone”)
- ⊙ Structurally stable – due to internal matrix of individual stones
- ⊙ Aesthetically pleasing – blends with surrounding soils
- ⊙ Highly versatile & affordable

**Versatility/Uses:**

- ⊙ Blanket over permeable soils or other suspected problem areas
- ⊙ Easily backfill around pipes & control structures as a durable anti-seep – without the need for compaction
- ⊙ Create a cut-trench or vertical barrier wall to reinforce compromised dams or earthen berms
- ⊙ Use in ponds, lakes, reservoirs, canals, or anywhere that leaks can be a problem

**Other Notables:**

- ⊙ Reduces labor – no need for compaction in lifts or layers; no need to be tilled or mixed with parent soil
- ⊙ Erosion-resistant – can also be surface dressed with sand, soil, or stone for additional protection
- ⊙ Eco-friendly – will not adversely alter water chemistry
- ⊙ Available in two packaging options: 50-lb. bags and 2,400-lb. bulk bags (priced by ton)



**Figure 1.** AquaBlok<sup>™</sup> applied at 7-lbs/ft<sup>2</sup> (~1” dry material thickness) atop ~1” layer of ordinary gravel. Time lapse: LEFT: immediately after inundation and RIGHT: 24 hours after inundation. Note original boundary between product and water (dashed red line) demonstrating swell/expansion of product over time.